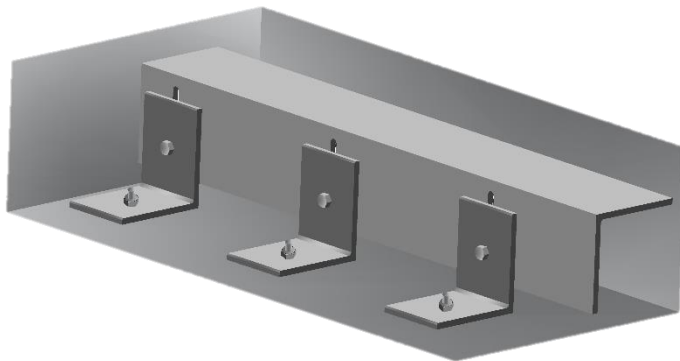


Adjustable Frame Technical Sheet

Hendrick's adjustable frames are designed to be used in pit applications where there are uneven floors or in areas where grates are unable to span the full width of an opening. The frames can be used alone or along with the insert bars used in Hendrick's Profile Bar* grates to increase the span of the panels throughout the pit opening.



Frame Design

- Frame is manufactured using inverted slotted angle with angle brackets which are bolted into a concrete base.
- Frame sections are placed along traffic direction with spacing determined by our engineers for the desired load requirement.

Installation

- Mounting brackets are to be shimmed level during installation to insure grates are supported properly.
- Simply refer to Hendrick's submittal drawings for frame layout before beginning installation.

Adjustable Frame Options

Available in multiple combinations to work with pit requirements up 6" in depth.