

# Table of Contents

*Please select the construction method and mounting system to be taken directly to the specific instructions.*

## Profile Bar

- [EZ Loc Mounting System](#)
- [Hidden Mounting Tab System](#)
- [Surface Mounting System](#)

## Resistance Welded or Wedge Wire

- [EZ Loc Mounting System](#)
- [Hidden Hold-Down Clip System](#)
- [Hidden Mounting Tab System](#)
- [Surface Mounting System](#)

## Profile Bar EZ Loc Mounting System Installation Instructions

### 1) Site Preparation

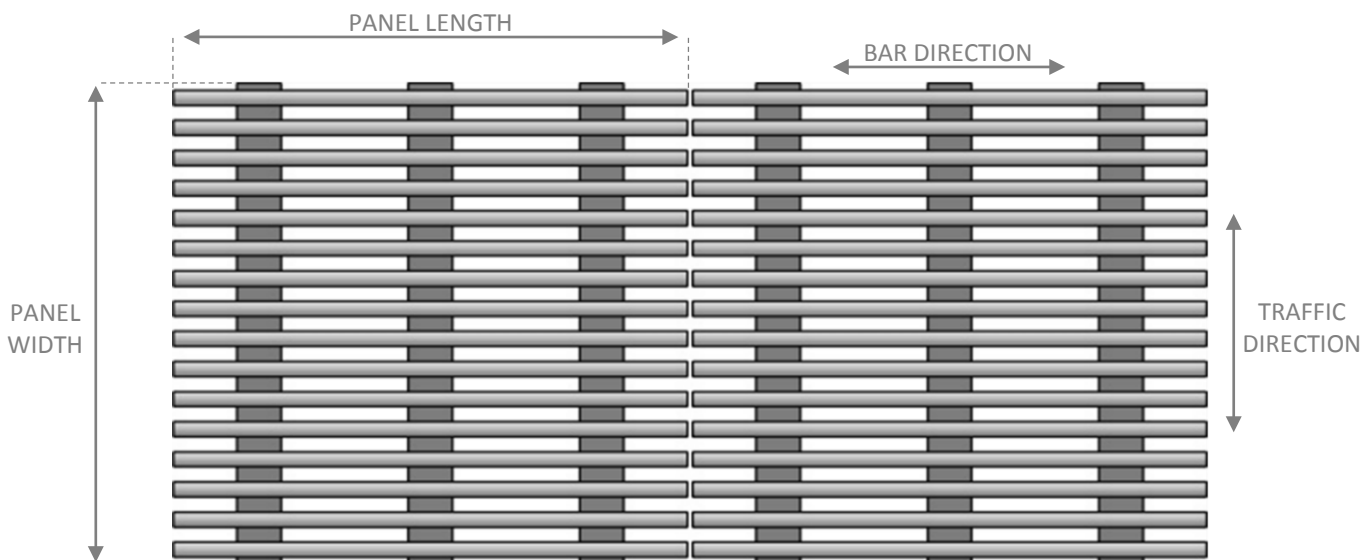
- Use forms to prepare a recess in concrete a minimum of grating height plus frame thickness.
- Recess should be overall size of unit plus 1/16" on all sides of recess to allow for clearance.
- Ensure the top of frames will be flush with finish floor.
- Remove forms once concrete has cured.

### 2) Assemble & Set Frame

- Assemble the level base frame. The ends of frame pieces are mitered, predrilled and countersunk for quick assembly.
- Set the frame assembly around the perimeter of the formed recess.
- Shim frame as necessary to elevate frame assembly to finished floor height.
- Before fastening, check finished floor surface height and ensure frame is plumb and square.
- Install frame using 1/4" flathead tapcon screws (recommended screw length: 1- 1/4").
- Clean the concrete recess to remove any dirt, oily film, and/or debris.

### 3) Grout

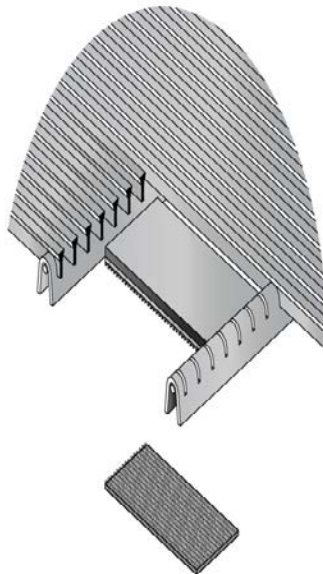
- Grout concrete pit surface to bring bottom of recess flush with top of lower frame leg using waterproof self-leveling grout (recommended brands: Quikrete #1585 mixed with #8610 Acrylic Fortifier or Vinylcrete with Acrylic Fortifier).
- Pour and level grout using the legs within frame opening as a screed point (IMPORTANT: bed surface must be smooth and level for proper grille installation, alignment, and to prevent tripping hazards).
- Allow grout to properly dry prior to grille installation.



## Profile Bar EZ Loc Mounting System Installation Instructions

### 4) Grille Installation

- Stainless steel should not come into contact with carbon steel once removed from crates.
- Test fit all the grille sections at locations on shop drawings with frames. Each section should be evenly spaced inside of perimeter frame and adjacent sections.
- If cutting and notching needs to be done at the jobsite, please contact Hendrick (270) 685-5138. Hendrick must approve any modifications done to the grilles to maintain warranty.
- Cuts should be made using a grinder with a new wafer wheel. Hendrick recommends CGW 6 x .045 x 7/8. Take particular care to deburr ends of bars and supports after cutting.
- Brush areas to removed loose dirt and debris.
- Remove grilles and clean mounting areas with a 50/50 mixture of isopropyl alcohol and water. Area must be completely dry before proceeding.
- Flip grates over a non-abrasive surface and peel off backing from pads on mounting areas.
- Flip grates back over & place into correction positions inside of frame. Repeat process with remaining panels.
- Once all are in positions (bars and supports align) apply firm downward pressure over all mounting areas.
- Allow the grates to set in place for a minimum of 24 hours. Best if left undisturbed for 72 hours for maximum adhesion.
- If some pads do not adhere, clean area again with the isopropyl mixture, let dry and use Loctite Epoxy Instant Mix to re-attach. Additional mounting pad material included with shipment.
- Cover grille with plywood temporarily until jobsite work is complete to prevent damage.
- Additional mounting material can be ordered by contacting Hendrick (270) 685-5138.



## Profile Bar Hidden Mounting Tab System Installation Instructions

### 1) Site Preparation

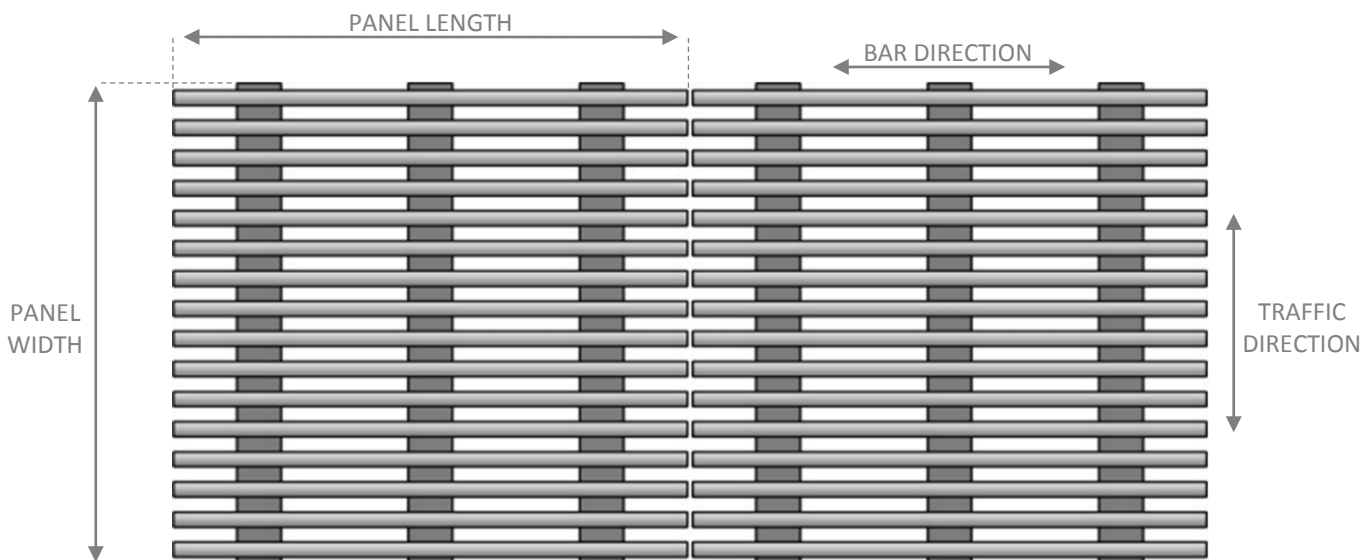
- Use forms to prepare a recess in concrete a minimum of grating height plus frame thickness.
- Recess should be overall size of unit plus 1/16" on all sides of recess to allow for clearance.
- Ensure the top of frames will be flush with finish floor.
- Remove forms once concrete has cured.

### 2) Assemble & Set Frame

- Assemble the level base frame. The ends of frame pieces are mitered, predrilled and countersunk for quick assembly.
- Set the frame assembly around the perimeter of the formed recess.
- Shim frame as necessary to elevate frame assembly to finished floor height.
- Before fastening, check finished floor surface height and ensure frame is plumb and square.
- Install frame using 1/4" flathead tapcon screws (recommended screw length: 1- 1/4").
- Clean the concrete recess to remove any dirt, oily film, and/or debris.

### 3) Grout

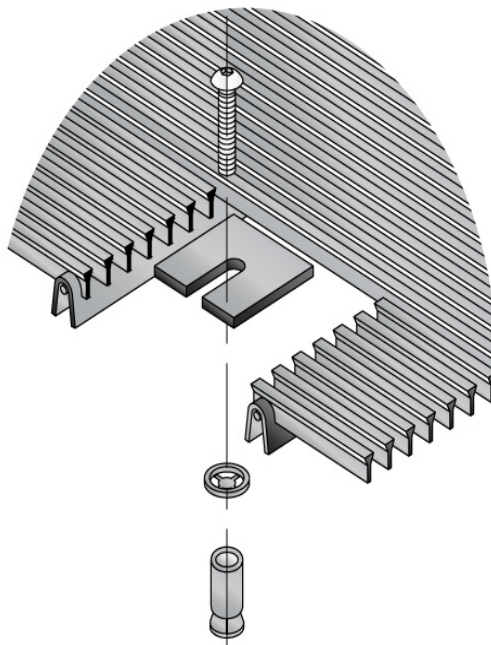
- Grout concrete pit surface to bring bottom of recess flush with top of lower frame leg using waterproof self-leveling grout (recommended brands: Quikrete #1585 mixed with #8610 Acrylic Fortifier or Vinylcrete with Acrylic Fortifier).
- Pour and level grout using the legs within frame opening as a screed point (IMPORTANT: bed surface must be smooth and level for proper grille installation, alignment, and to prevent tripping hazards).
- Allow grout to properly dry prior to grille installation.



## Profile Bar Hidden Mounting Tab System Installation Instructions

### 4) Grille Installation

- Stainless steel should not come into contact with carbon steel once removed from crates.
- Test fit all the grille sections at locations on shop drawings with frames. Each section should be evenly spaced inside of perimeter frame and adjacent sections.
- If cutting and notching needs to be done at the jobsite, please contact Hendrick (270) 685-5138. Hendrick must approve any modifications done to the grilles to maintain warranty.
- Cuts should be made using a grinder with a new wafer wheel. Hendrick recommends CGW 6 x .045 x 7/8. Take particular care to deburr ends of bars and supports after cutting.
- Be sure surface bars and supports align between each panel. Mark all surface fastener locations on the grouted surface for each section.
- Remove sections and drill all fastener holes at marked locations in grouted base and install lead anchors to grouted bed.
- Place grates back into their locations and fasten down using the button head cap screws supplied with grating. It may be necessary to retain screws in this location temporarily by using tape on the backside of the mounting bracket. Use 1/8" hex tool to reach between the surface bars down to the screw.
- Start each screw in its location and once engaged snug all fasteners tightly, starting from the center and working outwards in a circular manner. Repeat for all sections.
- Cover grille with plywood temporarily until jobsite work is complete to prevent damage.



## Profile Bar Surface Block Mounting System Installation Instructions

### 1) Site Preparation

- Use forms to prepare a recess in concrete a minimum of grating height plus frame thickness.
- Recess should be overall size of unit plus 1/16" on all sides of recess to allow for clearance.
- Ensure the top of frames will be flush with finish floor.
- Remove forms once concrete has cured.

### 2) Assemble & Set Frame

- Assemble the level base frame. The ends of frame pieces are mitered, predrilled and countersunk for quick assembly.
- Set the frame assembly around the perimeter of the formed recess.
- Shim frame as necessary to elevate frame assembly to finished floor height.
- Before fastening, check finished floor surface height and ensure frame is plumb and square.
- Install frame using 1/4" flathead tapcon screws (recommended screw length: 1- 1/4").
- Clean the concrete recess to remove any dirt, oily film, and/or debris.

### 3) Grout

- Grout concrete pit surface to bring bottom of recess flush with top of lower frame leg using waterproof self-leveling grout (recommended brands: Quikrete #1585 mixed with #8610 Acrylic Fortifier or Vinylcrete with Acrylic Fortifier).
- Pour and level grout using the legs within frame opening as a screed point (IMPORTANT: bed surface must be smooth and level for proper grille installation, alignment, and to prevent tripping hazards).
- Allow grout to properly dry prior to grille installation.

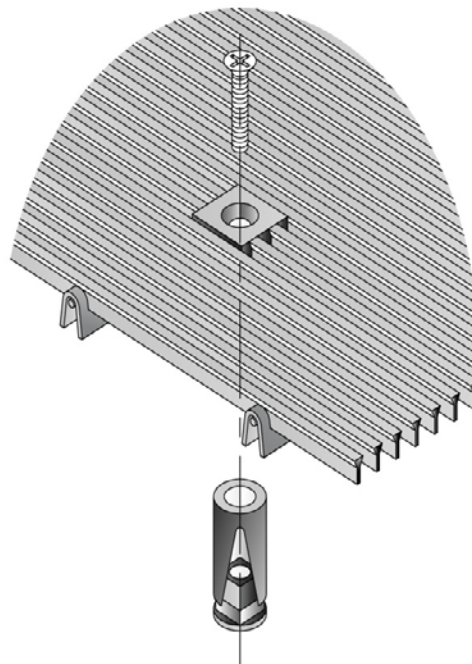




## Profile Bar Surface Block Mounting System Installation Instructions

### 4) Grille Installation

- Stainless steel should not come into contact with carbon steel once removed from crates.
- Test fit all the grille sections at locations on shop drawings with frames. Each section should be evenly spaced inside of perimeter frame and adjacent sections.
- If cutting and notching needs to be done at the jobsite, please contact Hendrick (270) 685-5138. Hendrick must approve any modifications done to the grilles to maintain warranty.
- Cuts should be made using a grinder with a new wafer wheel. Hendrick recommends CGW 6 x .045 x 7/8. Take particular care to deburr ends of bars and supports after cutting.
- Set sections into place being sure that all wires and supports align. Mark all surface fastener locations on the grouted surface for each section.
- Remove sections and drill all fastener holes at marked locations in grouted base and install lead anchors to grouted bed.
- Place grates back into their locations and fasten down using the flathead machine screws supplied with grating. Start each screw in its location and once engaged snug all fasteners tightly starting from the center and working outwards in a circular manner. Repeat for all sections.
- Cover grille with plywood temporarily until jobsite work is complete to prevent damage.



## Resistance Welded EZ Loc Mounting System Installation Instructions

### 1) Site Preparation

- Use forms to prepare a recess in concrete a minimum of grating height plus frame thickness.
- Recess should be overall size of unit plus 1/16" on all sides of recess to allow for clearance.
- Ensure the top of frames will be flush with finish floor.
- Remove forms once concrete has cured.

### 2) Assemble & Set Frame

- Assemble the level base frame. The ends of frame pieces are mitered, predrilled and countersunk for quick assembly.
- Set the frame assembly around the perimeter of the formed recess.
- Shim frame as necessary to elevate frame assembly to finished floor height.
- Before fastening, check finished floor surface height and ensure frame is plumb and square.
- Install frame using 1/4" flathead tapcon screws (recommended screw length: 1- 1/4").
- Clean the concrete recess to remove any dirt, oily film, and/or debris.

### 3) Grout

- Grout concrete pit surface to bring bottom of recess flush with top of lower frame leg using waterproof self-leveling grout (recommended brands: Quikrete #1585 mixed with #8610 Acrylic Fortifier or Vinylcrete with Acrylic Fortifier).
- Pour and level grout using the legs within frame opening as a screed point (IMPORTANT: bed surface must be smooth and level for proper grille installation, alignment, and to prevent tripping hazards).
- Allow grout to properly dry prior to grille installation.

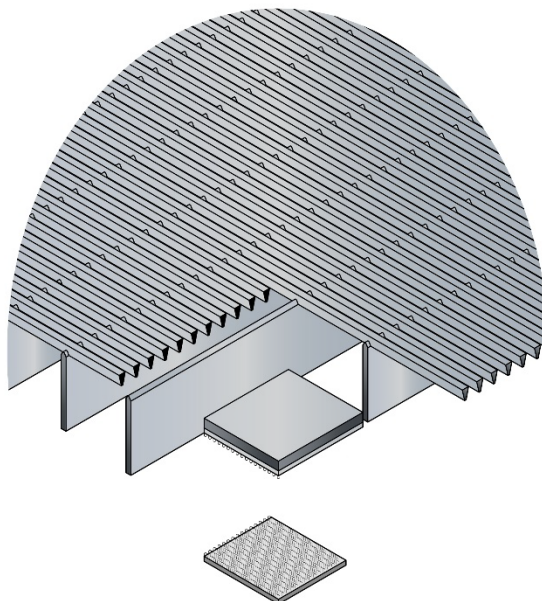




## Resistance Welded EZ Loc Mounting System Installation Instructions

### 4) Grille Installation

- Stainless steel should not come into contact with carbon steel once removed from crates.
- Test fit all the grille sections at locations on shop drawings with frames. Each section should be evenly spaced inside of perimeter frame and adjacent sections.
- If cutting and notching needs to be done at the jobsite, please contact Hendrick (270) 685-5138. Hendrick must approve any modifications done to the grilles to maintain warranty.
- Cuts should be made using a grinder with a new wafer wheel. Hendrick recommends CGW 6 x .045 x 7/8. Take particular care to deburr ends of bars and supports after cutting.
- Brush areas to removed loose dirt and debris.
- Remove grilles and clean mounting areas with a 50/50 mixture of isopropyl alcohol and water. Area must be completely dry before proceeding.
- Flip grates over a non-abrasive surface and peel off backing from pads on mounting areas.
- Flip grates back over & place into correction positions inside of frame. Repeat process with remaining panels.
- Once all are in positions (bars and supports align) apply firm downward pressure over all mounting areas.
- Allow the grates to set in place for a minimum of 24 hours. Best if left undisturbed for 72 hours for maximum adhesion.
- If some pads do not adhere, clean area again with the isopropyl mixture, let dry and use Loctite Epoxy Instant Mix to re-attach. Additional mounting pad material included with shipment.
- Cover grille with plywood temporarily until jobsite work is complete to prevent damage.
- Additional mounting material can be ordered by contacting Hendrick (270) 685-5138.



## Resistance Welded Hidden Hold-Down Clip System Installation Instructions

### 1) Site Preparation

- Use forms to prepare a recess in concrete a minimum of grating height plus frame thickness.
- Recess should be overall size of unit plus 1/16" on all sides of recess to allow for clearance.
- Ensure the top of frames will be flush with finish floor.
- Remove forms once concrete has cured.

### 2) Assemble & Set Frame

- Assemble the level base frame. The ends of frame pieces are mitered, predrilled and countersunk for quick assembly.
- Set the frame assembly around the perimeter of the formed recess.
- Shim frame as necessary to elevate frame assembly to finished floor height.
- Before fastening, check finished floor surface height and ensure frame is plumb and square.
- Install frame using 1/4" flathead tapcon screws (recommended screw length: 1- 1/4").
- Clean the concrete recess to remove any dirt, oily film, and/or debris.

### 3) Grout

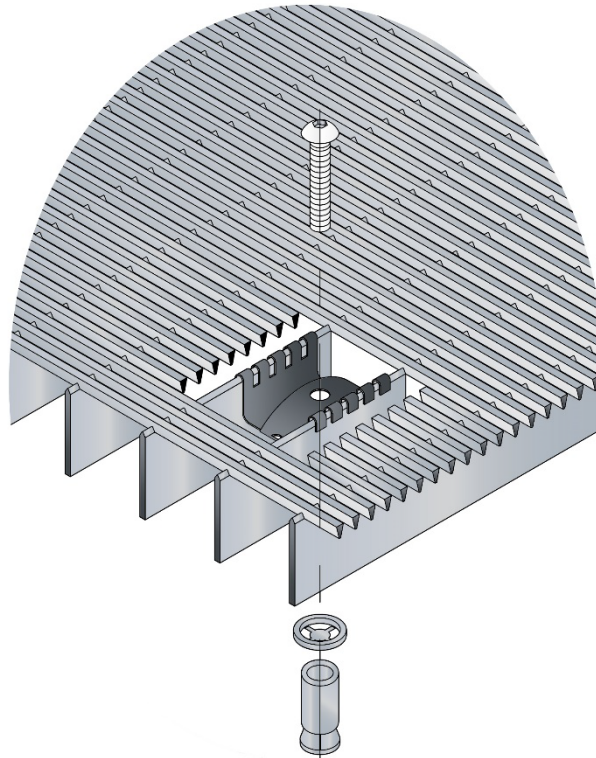
- Grout concrete pit surface to bring bottom of recess flush with top of lower frame leg using waterproof self-leveling grout (recommended brands: Quikrete #1585 mixed with #8610 Acrylic Fortifier or Vinylcrete with Acrylic Fortifier).
- Pour and level grout using the legs within frame opening as a screed point (IMPORTANT: bed surface must be smooth and level for proper grille installation, alignment, and to prevent tripping hazards).
- Allow grout to properly dry prior to grille installation.



## Resistance Welded Hidden Hold-Down Clip System Installation Instructions

### 4) Grille Installation

- Stainless steel should not come into contact with carbon steel once removed from crates.
- Test fit all the grille sections at locations on shop drawings with frames. Each section should be evenly spaced inside of perimeter frame and adjacent sections.
- If cutting and notching needs to be done at the jobsite, please contact Hendrick (270) 685-5138. Hendrick must approve any modifications done to the grilles to maintain warranty.
- Cuts should be made using a grinder with a new wafer wheel. Hendrick recommends CGW 6 x .045 x 7/8. Take particular care to deburr ends of bars and supports after cutting.
- Snap all hold-down clips in from the backside of the grille. Clips should be placed approximately 3" in from outside edge and evenly spaced 24"-36" apart.
- Be sure surface wires and supports align between each panel. Mark all hold-down fastener locations on the grouted surface for each section.
- Remove sections and drill all fastener holes at marked locations in grouted bed.
- Place all screws and retaining washers into brackets and set grate into place. Use 1/8" hex tool to reach between the surface bars down to the screw.
- Start each screw in its location and once engaged snug all fasteners tightly, starting from the center and working outwards in a circular manner. Repeat for all sections.
- Cover grille with plywood temporarily until jobsite work is complete to prevent damage.



## Resistance Welded Hidden Mounting Tab System Installation Instructions

### 1) Site Preparation

- Use forms to prepare a recess in concrete a minimum of grating height plus frame thickness.
- Recess should be overall size of unit plus 1/16" on all sides of recess to allow for clearance.
- Ensure the top of frames will be flush with finish floor.
- Remove forms once concrete has cured.

### 2) Assemble & Set Frame

- Assemble the level base frame. The ends of frame pieces are mitered, predrilled and countersunk for quick assembly.
- Set the frame assembly around the perimeter of the formed recess.
- Shim frame as necessary to elevate frame assembly to finished floor height.
- Before fastening, check finished floor surface height and ensure frame is plumb and square.
- Install frame using 1/4" flathead tapcon screws (recommended screw length: 1- 1/4").
- Clean the concrete recess to remove any dirt, oily film, and/or debris.

### 3) Grout

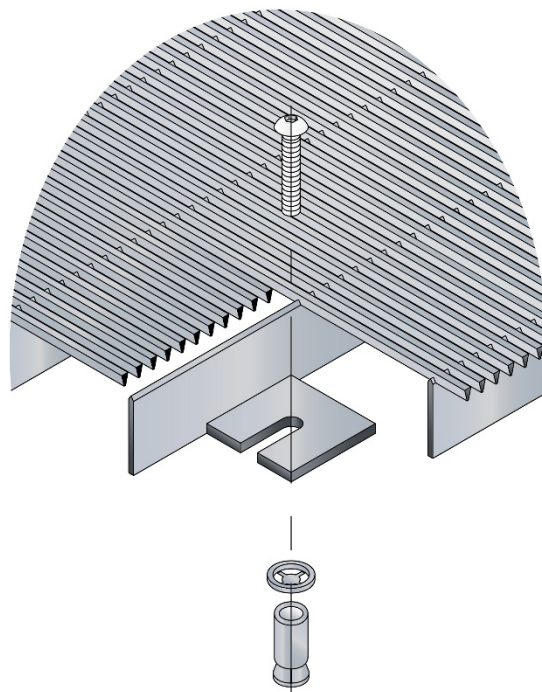
- Grout concrete pit surface to bring bottom of recess flush with top of lower frame leg using waterproof self-leveling grout (recommended brands: Quikrete #1585 mixed with #8610 Acrylic Fortifier or Vinylcrete with Acrylic Fortifier).
- Pour and level grout using the legs within frame opening as a screed point (IMPORTANT: bed surface must be smooth and level for proper grille installation, alignment, and to prevent tripping hazards).
- Allow grout to properly dry prior to grille installation.



## Resistance Welded Hidden Mounting Tab System Installation Instructions

### 4) Grille Installation

- Stainless steel should not come into contact with carbon steel once removed from crates.
- Test fit all the grille sections at locations on shop drawings with frames. Each section should be evenly spaced inside of perimeter frame and adjacent sections.
- If cutting and notching needs to be done at the jobsite, please contact Hendrick (270) 685-5138. Hendrick must approve any modifications done to the grilles to maintain warranty.
- Cuts should be made using a grinder with a new wafer wheel. Hendrick recommends CGW 6 x .045 x 7/8. Take particular care to deburr ends of bars and supports after cutting.
- Be sure surface bars and supports align between each panel. Mark all surface fastener locations on the grouted surface for each section.
- Remove sections and drill all fastener holes at marked locations in grouted base and install lead anchors to grouted bed.
- Place grates back into their locations and fasten down using the button head cap screws supplied with grating. It may be necessary to retain screws in this location temporarily by using tape on the backside of the mounting bracket. Use 1/8" hex tool to reach between the surface bars down to the screw.
- Start each screw in its location and once engaged snug all fasteners tightly, starting from the center and working outwards in a circular manner. Repeat for all sections.
- Cover grille with plywood temporarily until jobsite work is complete to prevent damage.





## Resistance Welded Surface Block Mounting System Installation Instructions

### 1) Site Preparation

- Use forms to prepare a recess in concrete a minimum of grating height plus frame thickness.
- Recess should be overall size of unit plus 1/16" on all sides of recess to allow for clearance.
- Ensure the top of frames will be flush with finish floor.
- Remove forms once concrete has cured.

### 2) Assemble & Set Frame

- Assemble the level base frame. The ends of frame pieces are mitered, predrilled and countersunk for quick assembly.
- Set the frame assembly around the perimeter of the formed recess.
- Shim frame as necessary to elevate frame assembly to finished floor height.
- Before fastening, check finished floor surface height and ensure frame is plumb and square.
- Install frame using 1/4" flathead tapcon screws (recommended screw length: 1- 1/4").
- Clean the concrete recess to remove any dirt, oily film, and/or debris.

### 3) Grout

- Grout concrete pit surface to bring bottom of recess flush with top of lower frame leg using waterproof self-leveling grout (recommended brands: Quikrete #1585 mixed with #8610 Acrylic Fortifier or Vinylcrete with Acrylic Fortifier).
- Pour and level grout using the legs within frame opening as a screed point (IMPORTANT: bed surface must be smooth and level for proper grille installation, alignment, and to prevent tripping hazards).
- Allow grout to properly dry prior to grille installation.





## Resistance Welded Surface Block Mounting System Installation Instructions

### 4) Grille Installation

- Stainless steel should not come into contact with carbon steel once removed from crates.
- Test fit all the grille sections at locations on shop drawings with frames. Each section should be evenly spaced inside of perimeter frame and adjacent sections.
- If cutting and notching needs to be done at the jobsite, please contact Hendrick (270) 685-5138. Hendrick must approve any modifications done to the grilles to maintain warranty.
- Cuts should be made using a grinder with a new wafer wheel. Hendrick recommends CGW 6 x .045 x 7/8. Take particular care to deburr ends of bars and supports after cutting.
- Set sections into place being sure that all wires and supports align. Mark all surface fastener locations on the grouted surface for each section.
- Remove sections and drill all fastener holes at marked locations in grouted base and install lead anchors to grouted bed.
- Place grates back into their locations and fasten down using the flathead machine screws supplied with grating. Start each screw in its location and once engaged snug all fasteners tightly starting from the center and working outwards in a circular manner. Repeat for all sections.
- Cover grille with plywood temporarily until jobsite work is complete to prevent damage.

