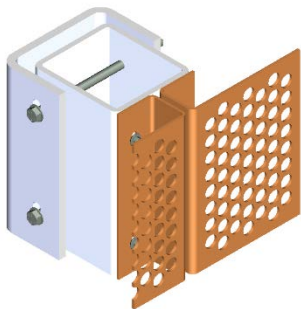


## H-CLAD™ Technical Sheet

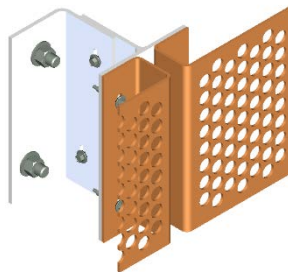
Hendrick's H-CLAD is a standardized cladding and mounting system that has been tested and proven to offer practical and functional benefits:

- ✓ Aluminum panel thickness of .125" or .190"
- ✓ Standard panel widths of 36", 42" or 48"
- ✓ Standard panel lengths of 72", 96" or 120"
- ✓ 12 standard round perforated patterns with open areas ranging from 23% to 77%
- ✓ Designed to withstand sustained winds up to 165 mph (Category 5)
- ✓ Multiple finish options offered to ensure the highest quality finish for your project
- ✓ Finish warranty options are available up to 20 years
- ✓ Concealed fastener panel system design
- ✓ All hardware supplied is solid stainless steel

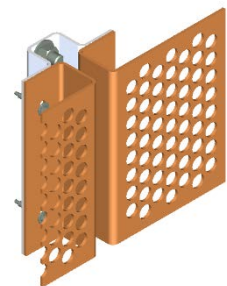
### Mounting Options...



H-CLAD HD



H-CLAD MD



H-CLAD LD

### Ideal for...

- Parking Garages
- Larger Cantilevers
- Larger spans between mounting brackets
- Office buildings and over windows
- Minimal Cantilevers
- Medium spans between mounting brackets
- Back lighting friendly
- Slim design
- Interior or solid wall applications
- No cantilevers
- Minimal spans between mounting
- Minimal offset from the building