

# Hendrick

## ARCHITECTURAL

### Perforated Corrugated Color Chart

877-840-0881

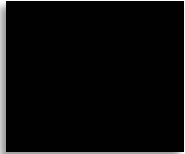
www.hendrickarch.com

arch@hendrickcorp.com

Carbondale, PA | Owensboro, KY

### Standard Colors (PVDF Finish)

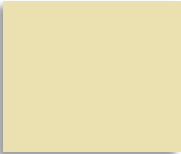
PVDF resin-based coatings provide high-performance durability for exterior and interior applications. These coatings are designed to resist fading, chalking, and abrasion. Finishes meet AAMA 2605-13 & AAMA 620-02.



Black (02)



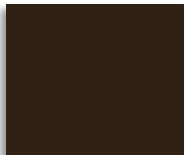
Patina Green (12)



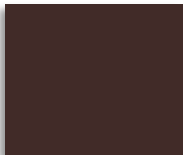
Concord Cream (05)



Charcoal Grey (62)



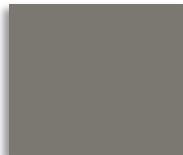
Classic Bronze (01)



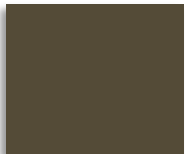
Chocolate Brown (04)



Almond (36)



Slate Grey (20)



Medium Bronze (03)



Boysenberry (25)



Sandstone (06)



Dove Grey (13)



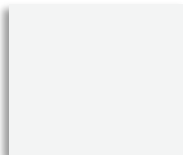
Hartford Green (27)



Redwood (07)



Regal Blue (18)



Ascot White (10)



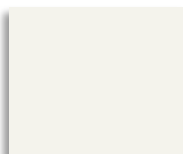
Forest Green (11)



Mission Red (08)



Slate Blue (21)



Bone White (26)



Teal (19)



Sierra Tan (09)



Siam Blue (14)



Hemlock Green (30)



Rawhide (15)



Rocky Grey (16)

### Premium Finish (PVDF Finish)



Antique Patina (24)



Silversmith (28)



Champagne (31)



Brite Red (17)



Coppertone (23)



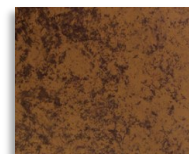
Clear Anodized (70)



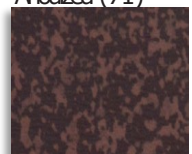
Titanium (35)



Dark Bronze Anodized (71)



Copper Brown (42)



Tarnished Red (47)

### Colors and finishes are available in:

.032" aluminum

.040" aluminum

.050" aluminum

*Custom colors are available upon request.*

# Hendrick

## ARCHITECTURAL

### Perforated Corrugated Profiles

Nine standard profiles are offered, as well as custom options to fit any project's design intent. The panels are available in a selection of aluminum thicknesses, panel profiles, and colors.

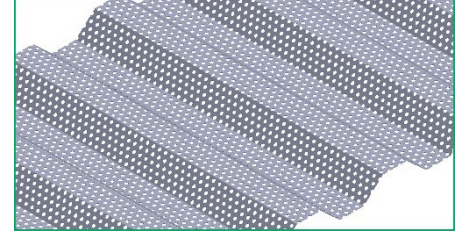
BWW400



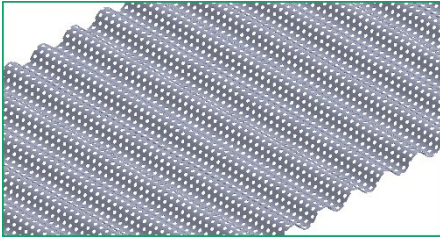
BWG390



BWR360



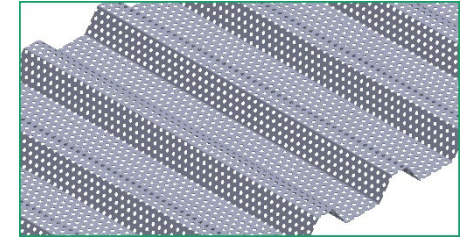
BWC374



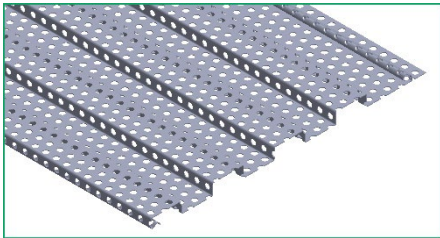
BWS240



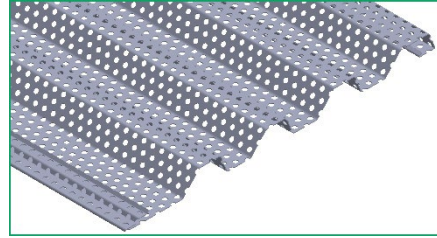
BWK360



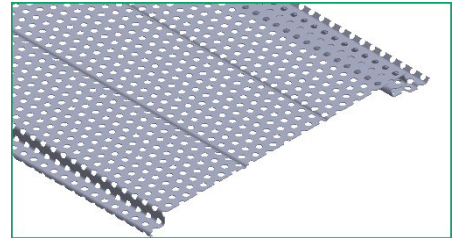
MFP120



MFR160



DWF120



### Open Area Percentages for Standard 60° Staggered Hole Patterns by Profile

|                | BWC374 | BWG390 | BWK360 | BWR360 | BWW400 | DWF120 | MFP120 | MFR160 | BWS240 |
|----------------|--------|--------|--------|--------|--------|--------|--------|--------|--------|
| .125" on .188" | 47.4   | 45.5   | 49.2   | 46.3   | 46.6   | 47.8   | 54.7   | 57.1   | 56.4   |
| .125" on .218" | 35.3   | 33.9   | 36.6   | 34.5   | 34.7   | 35.6   | 40.7   | 42.5   | 41.9   |
| .125" on .250" | 26.8   | 25.8   | 27.8   | 26.2   | 26.4   | 27.1   | 30.9   | 32.3   | 31.9   |
| .125" on .375" | 11.9   | 11.5   | 12.4   | 11.7   | 11.7   | 12.0   | 13.8   | 14.4   | 14.2   |
| .188" on .313" | 38.7   | 37.2   | 40.1   | 37.8   | 38.1   | 39.0   | 44.7   | 46.6   | 46.0   |
| .250" on .500" | 26.8   | 25.8   | 27.8   | 26.2   | 26.4   | 27.0   | 30.9   | 32.3   | 31.9   |
| .375" on .500" | 60.3   | 57.9   | 62.6   | 59.0   | 59.3   | 60.9   | 69.6   | 72.6   | 71.7   |
| .375" on .563" | 47.6   | 45.7   | 49.4   | 46.5   | 46.8   | 48.0   | 54.9   | 57.3   | 56.6   |

### Aluminum Options

|       | BWC374 | BWG390 | BWK360 | BWR360 | BWW400 | DWF120 | MFP120 | MFR160 | BWS240 |
|-------|--------|--------|--------|--------|--------|--------|--------|--------|--------|
| .032" | ✓      | ✓      | ✓      | ✓      | ✓      | ✓      | ✓      | ✓      | ✓      |
| .040" | ✓      | ✓      | ✓      | ✓      | ✓      | ✓      | ✓      | ✓      | ✓      |
| .050" | ✓      |        | ✓      | ✓      | ✓      | ✓      | ✓      | ✓      | ✓      |