

Hendrick

ARCHITECTURAL

Ventilation Grilles Technical Sheet

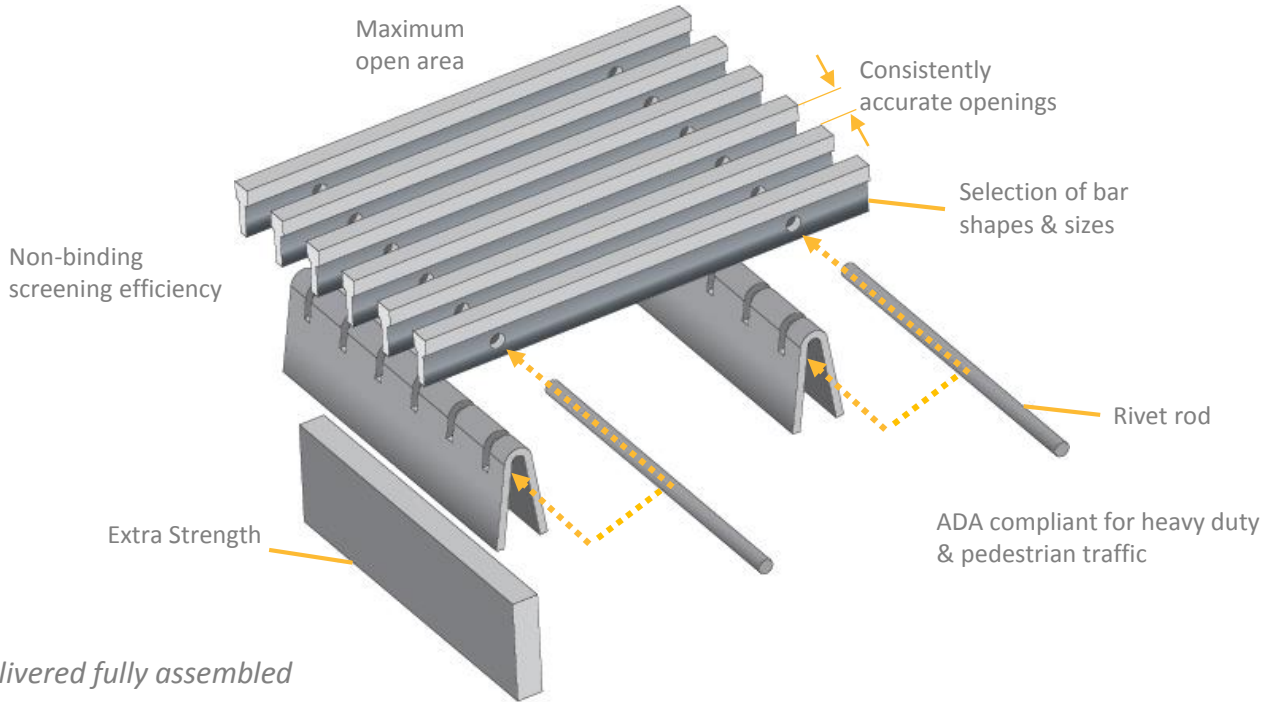
877-840-0881





www.hendrickarch.com


arch@hendrickcorp.com

Carbondale, PA | Elgin, IL | Owensboro, KY

Hendrick's *Profile Bar** is manufactured using a mechanically interlocked proprietary method of construction, making it one of the strongest systems available on the market. It's perfect for applications that require high strength or a very flat surface.



Profile Bar Images not to scale				
	T16	B16	B12	B9
Bar Width	.250"	.250"	.187"	.140"
Assembly Depths	1-1/4"	11/16" 13/16" 1-1/8"	11/16" 13/16" 1-1/8"	5/8" 3/4" 1-1/8"
<u>Options</u>				
Anti-Slip Coating	✓	✓	✓	✓

 *Hendrick's proprietary high-strength, mechanically interlocked construction method.

Hendrick

ARCHITECTURAL

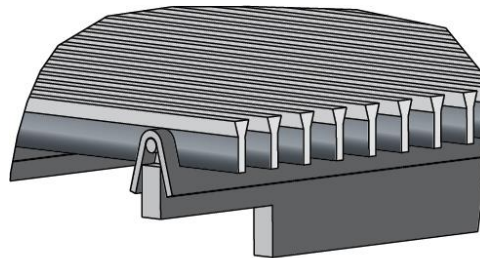
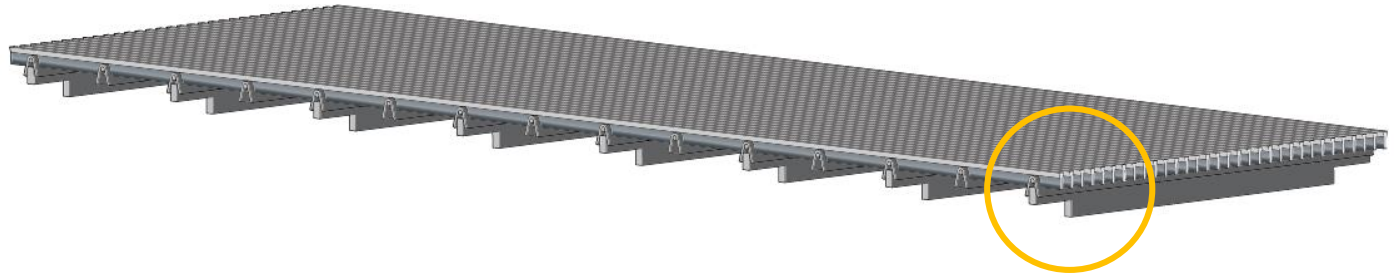
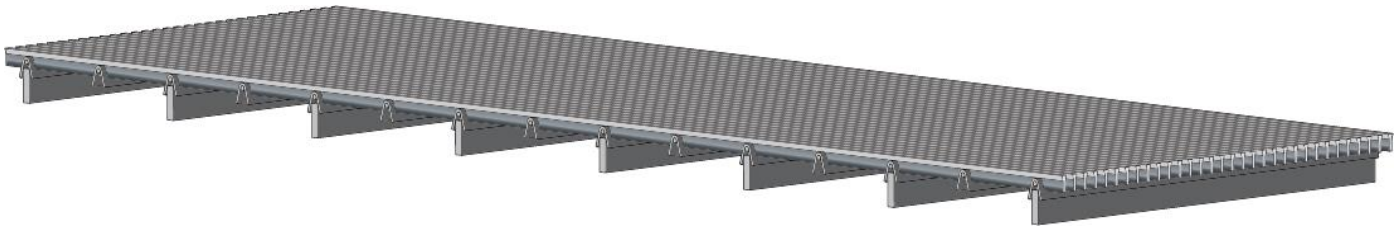
Ventilation Grilles Load Chart

877-840-0881

www.hendrickarch.com

arch@hendrickcorp.com

Carbondale, PA | Elgin, IL | Owensboro, KY



Inserts – Optional Notched

Load Recommendation Guide



Pedestrian

- Loads of 1-300 PSF
- Recommended for pedestrians, bicycles and wheel chair traffic